



李政道研究所
TSUNG-DAO LEE INSTITUTE

Workshop on Dense Matter Equation of State and Frontiers in Neutron Star Physics

28 March - 3 April 2024
Tsung-Dao Lee Institute

This workshop aims to bring together a group of experts in nuclear and particle theory/experiments, gravitational wave and electromagnetic astronomy, nuclear astrophysics, nucleosynthesis, numerical relativity and simulations to explore fundamental details of the states of ultra-dense matter on the QCD phase diagram which govern the physics of neutron stars (NSs).

Organizing Committee

Lie-Wen Chen (School of Physics and Astronomy, Shanghai Jiao Tong University)

Sophia Han (Tsung-Dao Lee Institute, Shanghai Jiao Tong University)

Zhenyu Zhu (Tsung-Dao Lee Institute, Shanghai Jiao Tong University)



<https://indico-tkli.sjtu.edu.cn/event/2258/>



About Tsung-Dao Lee Institute

Proposed by the Nobel laureate Tsung-Dao Lee and with support and endorsement from governments and ministries at national and municipal levels, Tsung-Dao Lee Institute (TDLI) is a basic research institute established at Shanghai Jiao Tong University in November 2016, aiming to build itself as a world-leading science institute.

Resonating with Professor Lee's vision, the Institute focuses on the most fundamental science questions and conducts cutting-edge research in physics and astronomy in an effort to shed light on the relationship between the maximum and the minimum in the universe, and the most fundamental and profound laws of interaction in the nature.

By bringing our research to extreme environments or creating extreme conditions, we strive to explore and control exotic and extreme states of matter with extreme detection methods. Eying on the greatest unsolved mysteries of the universe, we are pledged to systemically assemble our teams of close to 100 scientists to carry out pioneering research and collaboration on particle and nuclear physics, astronomy and astrophysics, and quantum science. Today, we've witnessed an emergence of innovations and an increasingly active presence in the science community. Looking forward, we envision fostering a supportive, inclusive culture of 桃(táo)李(lǐ)荫(yīn)翳(yì)家(jiā)安(ān)其

(qí)所(suǒ) (A verse from classical Chinese poetry describes a harbour where the talented are cultivated and empowered to happily explore their full potential, and people from the outside admire and wish to join.)



TDLI Location 李政道研究所地址

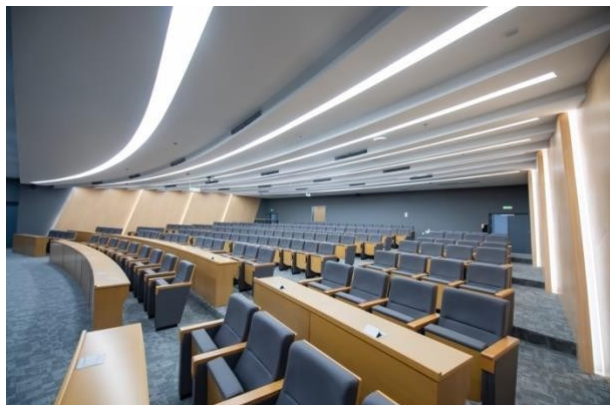
No.1, Lisuo Road, Pudong New Area, Shanghai

浦东新区李所路1号，对面是上科大附属学校



Workshop Venue

Lecture Hall, S5F-S541, Tsung-Dao Lee Institute
N122, Tsung-Dao Lee Institute



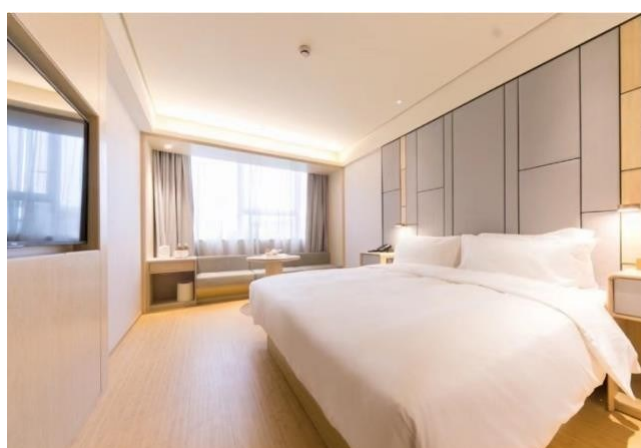
WIFI Connection

WIFI name: SJTU , SJTU-Guest
WIFI ID: tdl0328
Password:12345678

Eduroam is also available.

Accommodation

Ji Hotel (Jinke Road Branch) 全季酒店(上海张江金科路店)
No.188 Shengrong Road, Pudong, Shanghai 浦东新区盛荣路188弄



Meals

Breakfast: in hotel or self-arranged
Lunch: lunch box in TDLI canteen
Dinner: self-arranged

Transportation to TDLI

1. From airports

- From Shanghai Pudong International Airport
 - Recommended: take a taxi, approx. 25 minutes, 90 RMB
- From Shanghai Hongqiao International Airport
 - Recommended: take a taxi, approx. 38 minutes, 120 RMB

2. From train stations

- From Hongqiao Train Station
 - By cab: approx. 40 minutes, 130 RMB
 - By underground metro: Line 10 to the Site of the First CPC National Congress · Xintiandi Station, connecting to Line 13 to Zhongke Road, then take the Pudong No. 25 bus at Jinke Road Zhongke Road to Jinke Road Mianbei Road, take a walk, approx. 1 hour 30 minutes, 8 RMB.
- From Shanghai Train Station
 - By cab: approx. 30 minutes, 90 RMB
 - By underground metro: Line 1 to the Hanzhong Road, connecting to Line 13 to Zhongke Road, then take the Pudong No. 25 bus at Jinke Road Zhongke Road to Jinke Road Mianbei Road, take a walk, approx. 1 hour 10 minutes, 7 RMB.
- From Shanghai Southern Train Station
 - By cab: approx. 30 minutes, 70 RMB
 - By underground metro: Line 1 to People's Square Station, connecting to Line 8 to Chengshan Road, connecting to Line 13 to Zhongke Road, then take the Pudong No. 25 bus at Jinke Road Zhongke Road to Jinke Road Mianbei Road, take a walk, approx. 1 hour 30 minutes, 7 RMB.